



NuStone JAPAN

# larcore® A2

Aluminium Honeycomb Panels for Lightweight Architectural Envelopes

# INDEX



About us 04

Sustainability 05

**larcore® A2** 06

**larcore® A2 6 mm** 08

Dimensional characteristics of the panel  
Mechanical properties of the panel  
Aluminium honeycomb core properties  
Aluminium properties

**Hidetech® LIGHT** 10

**larcore® A2 14 mm** 14

Dimensional characteristics of the panel  
Mechanical properties of the panel  
Aluminium honeycomb core properties  
Aluminium properties

**Hidetech® PRO** 16

Other panels 20

Finishes 22

Quality 23

Certificates and Clasifications  
Full-scale fire tests

**Alucoil® Design** 25

Sunshades 26



**Alucoil** is a Spanish multinational headquartered in Miranda de Ebro (Burgos), specialist in the production of technologically advanced materials for the **building, transportation and Industrial sectors.**

## About us

Since 1996, **Alucoil** has been manufacturing and transforming the most innovative aluminum solutions under its prestigious brands, becoming a global benchmark in **technology, innovation, and professionalism.**

**Alucoil** operates multiple manufacturing facilities, providing service and exporting its high-quality, innovative products worldwide.

The company produces high-value-added products for its customers and is structured into three main production areas:

Composite

Honeycomb

Solar thermal energy



## SUSTAINABILITY

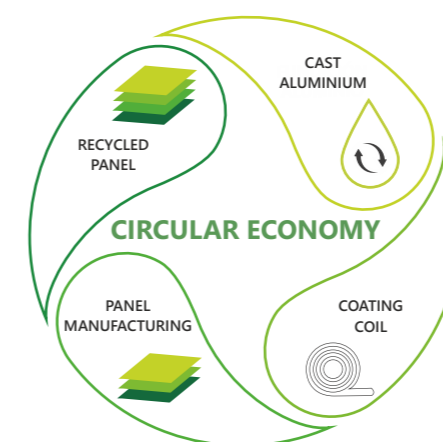
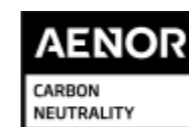
**Alucoil** considers sustainability a fundamental pillar of its business strategy. The company is committed to environmental responsibility through efficient and responsible processes, backed by the most stringent certifications. Its quality management system is certified under **ISO 9001**, while its environmental commitment is validated by **ISO 14001**, ensuring proper management of environmental risks associated with its activities.

**Alucoil** is a benchmark for sustainability in the aluminum sector. The company holds **Carbon Neutral** and **Zero Waste** certifications, achieving a 98.83% waste recovery rate. This means that **nearly all of its waste is recycled or reused**, reducing the environmental impact of its production to zero.

The manufacturing process of **larcore** A2 panels is continuous, optimizing raw material usage without creating large surpluses. All **production waste is carefully managed and recycled, allowing it to be reintegrated into the supply chain as raw materials.**

At the end of their lifecycle, **larcore** A2 panels can be melted down and reintroduced into the **Circular Economy**, ensuring a sustainable and efficient material lifecycle.

**larcore** A2 holds an **Environmental Product Declaration (EPD)** under the **international EPD System**, providing detailed insights into its environmental performance, reinforcing **Alucoil's** commitment to transparency and sustainability.



# larcore® A2

## Aluminium honeycomb panels

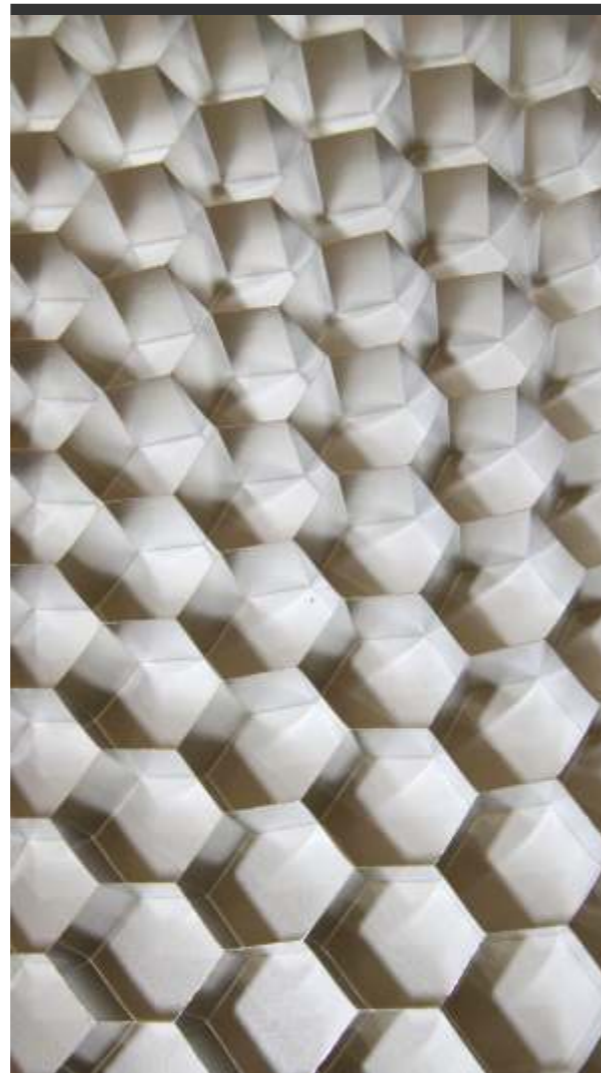
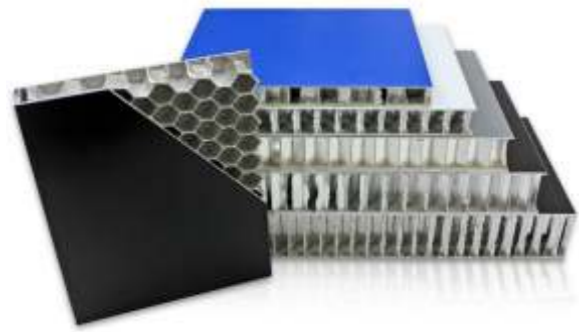
The industrial sectors tirelessly seek new technologies, products and building solutions with which to tackle projects more sustainably, optimising efficiency, improving output and raising performance.

After an exhaustive research and development (R&D) process, at **Alucoil®** we have been able to unite the properties inherent in "honeycomb" type structures with our industrial experience in the production of metal structural panels.

The result is the **larcore® A2** panel, an innovative aluminium honeycomb panel manufactured by advanced continuous industrial processing.

This product represents an integral solution for various architectural requirements, notable for its suitability for cladding architectural enclosures. It brings significant improvements in terms of rigidity, lightness, fire resistance, recyclability, insulation and energy efficiency.

**larcore® A2** panel is supplied in **thicknesses of 6 to 20 mm**, with **interior and exterior aluminium skins of 0.5 to 1.0 mm**.



#### MAIN CHARACTERISTICS:

- **Fire class A2-s1, d0 according to EN 13501-1.**
- **Rigidity.**
- **Flatness.**
- **Lightness.**
- **100% recyclable.**
- **Manufactured in width up to 2 metres.**

**Alucoil®** has developed two proprietary installation systems, marketed under the **Hidotech® LIGHT** and **Hidotech® PRO** brands. These systems are designed for the installation of panels and trays in ventilated façades, raised floors, false ceilings, and sunshades. **larcore® A2** panels must be installed in buildings in compliance with the regulations, technical guidelines, and building codes related to fire classification and protection in each country where they are used.

**Alucoil®** offers a wide range of products to meet the specific requirements of each country. However, it is the customer's responsibility to ensure compliance with the final use of the product and with the relevant building regulations or technical approvals applicable to the installation site.

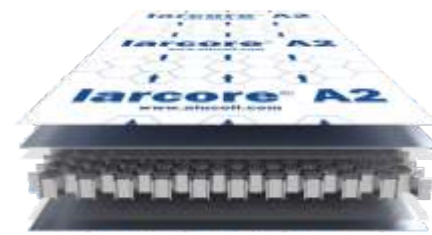


# larcore® A2 6 mm

Aluminium honeycomb panel for light architectural enclosures with a cassette installation system.

EPD® Environmental Product Declaration certification.

Tests successfully passed: Full-scale test BS 8414-1 & BS 8414-2.



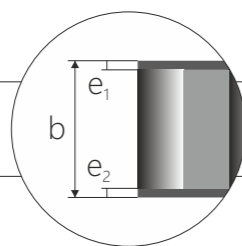
Protective film  
0,7 mm coated aluminium 5005 EN 573-3  
Bonding layer  
Aluminium honeycomb core  
Bonding layer  
0,5 aluminium 5005 EN 573-3



Business center SA Tower, Astana, Kazakhstan.  
INK Architects

## DIMENSIONAL CHARACTERISTICS

Total thickness "b"  
Width tolerance ≤ 1600 mm: ±0,2 mm  
Width tolerance > 1600 mm: -0,1 / +0,5 mm



b= 6 (mm)

External skin thickness "e<sub>1</sub>"

e<sub>1</sub>= 0,7 (mm)

Internal skin thickness "e<sub>2</sub>"

e<sub>2</sub>=0,5 (mm)

Weight

4,19 (kg/m<sup>2</sup>)

Length min. / max.

2000<sup>±</sup> - 14000<sup>±</sup> (mm)

Standard width

Panels of 2000 mm width the aluminium sheets are of 0,7 mm thickness.

1250<sup>±</sup> - 1500<sup>±</sup> - 1575<sup>±</sup> - 2000<sup>±</sup> (mm)

## MECHANICAL PROPERTIES OF THE PANEL

The purpose of the mechanical values is to be able to compare different product configurations. Specific calculations for each project must be requested to **Alucoil's** technical department.

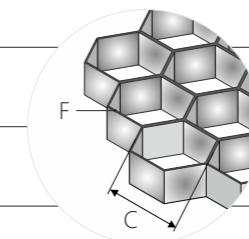
	Transversal axis	Longitudinal axis
Rigidity (EI)	2825 (kNcm <sup>2</sup> /m) DIN 53293	2386 (kNcm <sup>2</sup> /m) DIN 53293
Acoustic insulation (R <sub>a</sub> )	19,54 (dBa) ISO 10140-2	
Thermal resistance (R)	0,0068 (m <sup>2</sup> K/W)	

## COATED ALUMINIUM SKIN PROPERTIES

Modulus of elasticity (E)	7000 (N/mm <sup>2</sup> )
Ultimate tensile strength (R <sub>m</sub> )	125 < R <sub>m</sub> < 185 (N/mm <sup>2</sup> )
Yield strength (R <sub>p0,2</sub> )	>80 (N/mm <sup>2</sup> )
Elongation (A)	>4 (%)
Standard aluminium alloy	5005 <sup>(1)</sup> EN 573-3 <sup>(1)</sup> Other alloy available
Aluminium thermal expansion	2,3 mm/m Δ 100°C

## ALUMINIUM HONEYCOMB CORE PROPERTIES

Aluminium alloy	3005 <sup>(1)</sup> EN 573-3 <sup>(1)</sup> Other alloy available
Cell size (C)	1/4 " ≈ 6,35 mm
Foil thickness (F)	50μ
Compressive strength	2,20 Mpa DIN 53291
Density (ρ)	56 kg/m <sup>3</sup>



# Hidotech® LIGHT

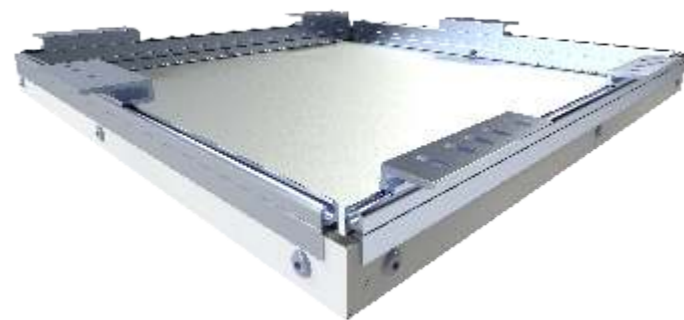
Forming of the cassette through cutting, milling, and perimeter profiles

## Hidotech® LIGHT system for architectural ceilings and façades.

Brackets, vertical profiles (mullions), clips and perimeter profile are extruded in aluminum EN AW 6106 T6 alloy, one of the most resistant. System support is based on vertical profiles (mullions) with an asymmetric T-shaped section, connected to the building by L-shaped section brackets.

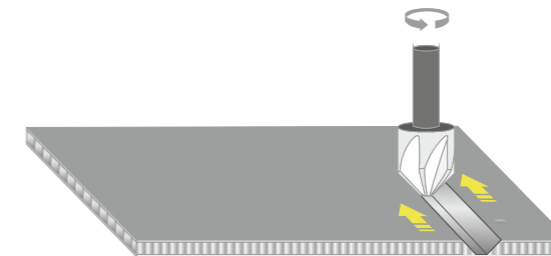
**larcore® A2 6 mm** panel is folded in cassettes. Exposed edges are closed on the perimeter by a profile used for waterproofing the core and for fixing cassettes to mullions. Perimeter profile is connected to cassettes edges using rivets. Those same rivets will also be placed at corners for assuring cassette forming. This perimeter profile has a guide rail for sliding in it special fixing clips. Clips will be placed and screwed against vertical profiles. System movement availability is assured by slotted-holes performed in clips and brackets too, and through the sliding possibility of clips inside the guide rail.

**Recommended for use on architectural façades. The installation of the larcore® A2 panel must guarantee its watertightness.**



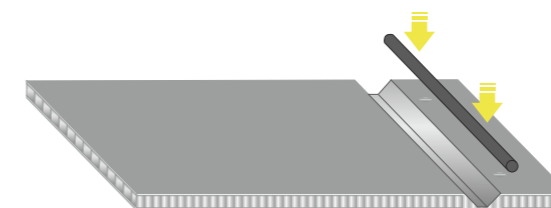
01

Machining of the panel



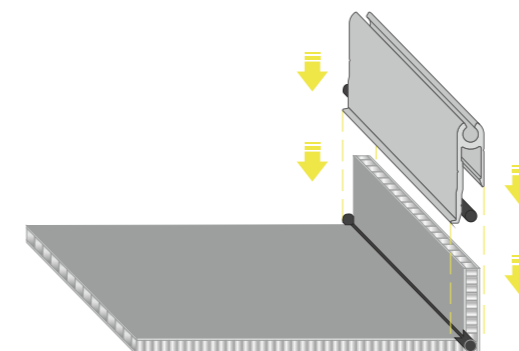
02

Sealing the panel with cellular cord.



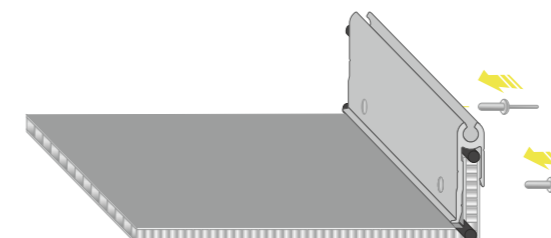
03

Placement to the LT-4 profile with cellular cords.

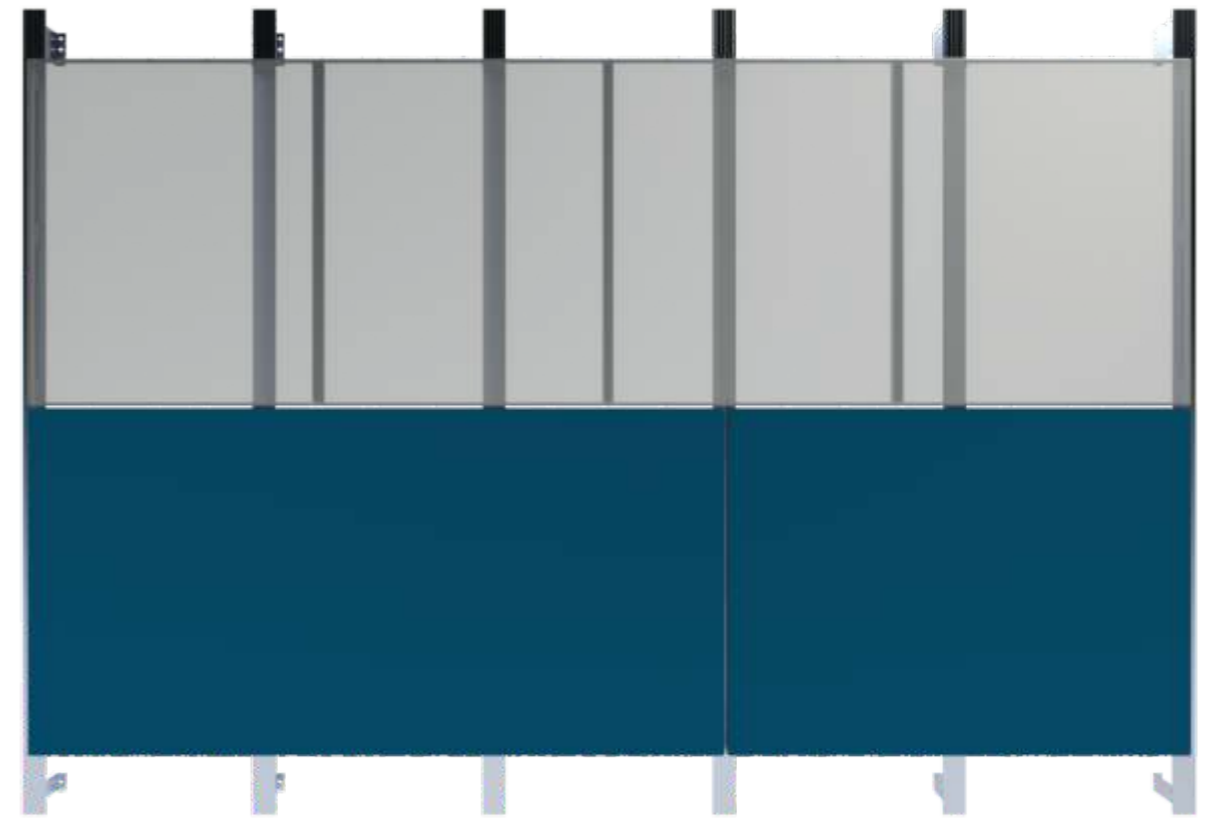
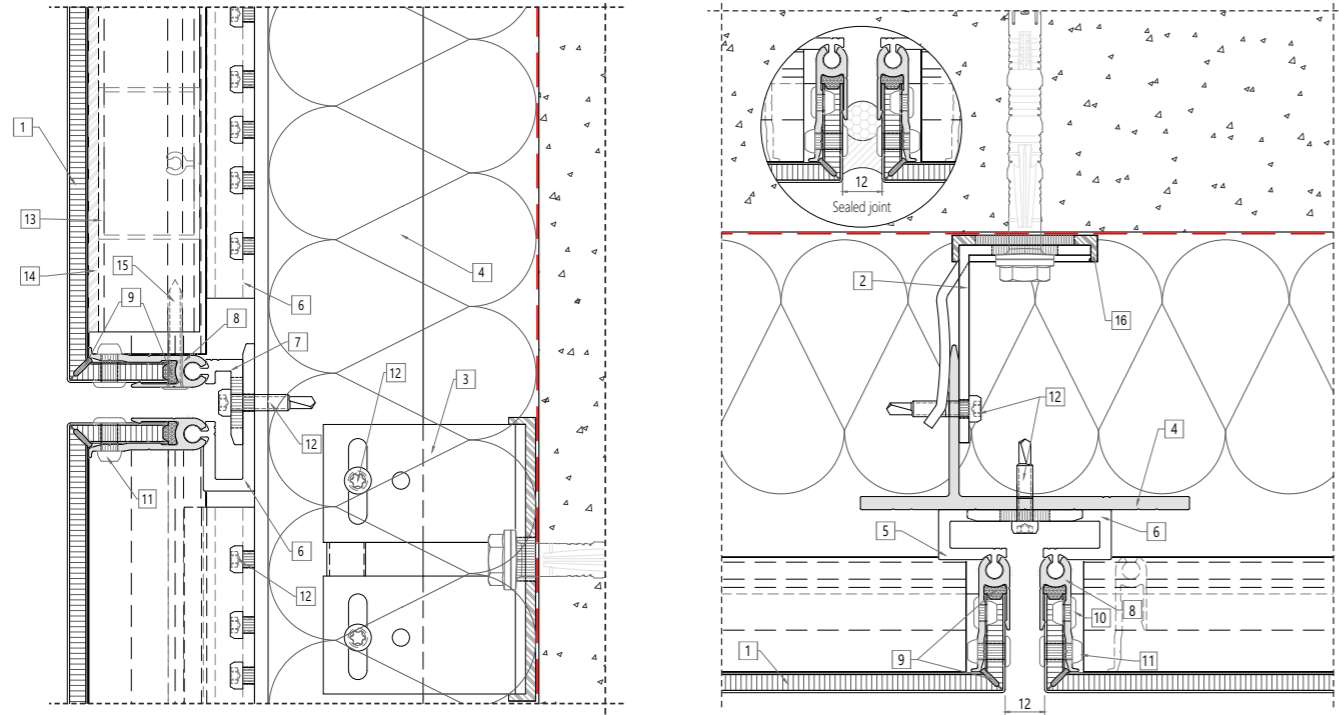


04

Fixing of the rivets.



## CONSTRUCTION DETAILS



## ACCESSORIES OF THE SYSTEM



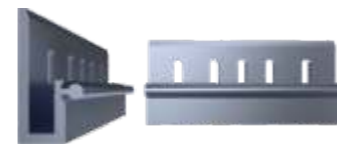
1. **Iarcore® A2 6 mm**
2. **LT-1A** wind weight bracket
3. **LT-1B** wind bracket
4. **LT-2** vertical profile
5. **LT-31M** mobile clip
6. **LT-31F** fixed clip (top/left)
7. **LT-32M** short mobile clip
8. **LT-4** perimetral profile
9. Cellular cord
10. Waterproofing rivet Ø4.8x8mm Alu/A2
11. Waterproofing rivet Ø4.8x16mm Alu/A2
12. EJOT TORX T25 special screw
13. **LC-RH** stiffener
14. Sika Tack Panel 50
15. INDEX flat head screw



LT-1A Wind weight bracket



LT-1B Wind bracket



LT-31M Mobile clip (right/bottom)



LT-31F Fixed clip (top/left)



LT-2 Vertical profile



LC-RH Stiffener



LT-32M Short mobile clip



LT-4 Perimetral profile

# larcore® A2 14 mm

Aluminium honeycomb panels for light architectural enclosures with a panel installation system.

For those who demand a perfect flat panel solution with a very high rigidity, **Alucoil®** has developed the **Hidetech® PRO** system from **larcore® A2** panels with a total thickness of 14 mm. A proposal based on clips that fix the edged panels to a very reduced substructure. A new concept that is extraordinarily light, non-combustible and with perfect flatness.

Panel with EPD® certificate (Environmental Product Declaration).

- Fire classification A2-s1, d0 EN 13501-1
  - BS 8414-1 & 2 full scale tests passed under BR 135 criteria
  - NFPA 285 procedure test and failure criteria passed.
- (consult technical sheet to know all the certificates)

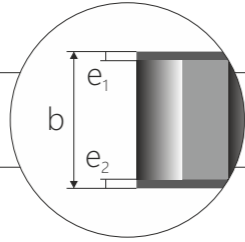


Protective film  
**1,0 mm coated aluminium 5005 EN 573-3**  
 Bonding layer  
**Aluminium honeycomb core**  
 Bonding layer  
**1,0 mm aluminium 5754 EN 573-3**



Viviendas Zafiro Valdebebas. Madrid, Spain.  
 Estudio de Arquitectura Morph

## DIMENSIONAL CHARACTERISTICS

Total thickness "b" Tolerance ±0,2 mm		b= 14 (mm)
External skin thickness "e <sub>1</sub> "		e <sub>1</sub> = 1,0 (mm)
Internal skin thickness "e <sub>2</sub> "		e <sub>2</sub> =1,0 (mm)
Weight		6,75 (kg/m <sup>2</sup> )
Length min. / max.		2000 <sup>±</sup> - 14000 <sup>±</sup> (mm)
Standard width		1250 <sup>±</sup> - 1500 <sup>±</sup> - 1575 <sup>±</sup> - 2000 <sup>±</sup> (mm)

## MECHANICAL PROPERTIES OF THE PANEL

The purpose of the mechanical values is to be able to compare different product configurations. Specific calculations for each project must be requested to **Alucoil's** technical department.

Rigidity (EI)	Extra rigid premium panel for use with <b>Hidetech® PRO</b> system. All necessary calculations are provided by our technical department.
Acoustic insulation (R <sub>w</sub> )	21,56 (dBa) ISO 10140-2
Thermal resistance (R)	0,0086 (m <sup>2</sup> K/W)

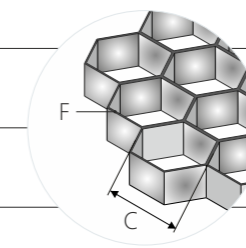
## COATED ALUMINIUM SKIN PROPERTIES

Aluminium alloy a) External skin b) Internal skin	a) 5005 <sup>(1)</sup> EN 573-3 b) 5754 <sup>(1)</sup> EN 573-3
Modulus of elasticity (E) External and internal skin	7000 (N/mm <sup>2</sup> )
Ultimate tensile strength (R <sub>m</sub> ) a) External skin b) Internal skin	a) 125 < R <sub>m</sub> < 185 (N/mm <sup>2</sup> ) b) >280 (N/mm <sup>2</sup> )
Yield strength (R <sub>p0,2</sub> ) a) External skin b) Internal skin	a) >80 (N/mm <sup>2</sup> ) b) >220 (N/mm <sup>2</sup> )
Elongation (A) External and internal skin	>4 (%)

<sup>(1)</sup>Other alloy availables

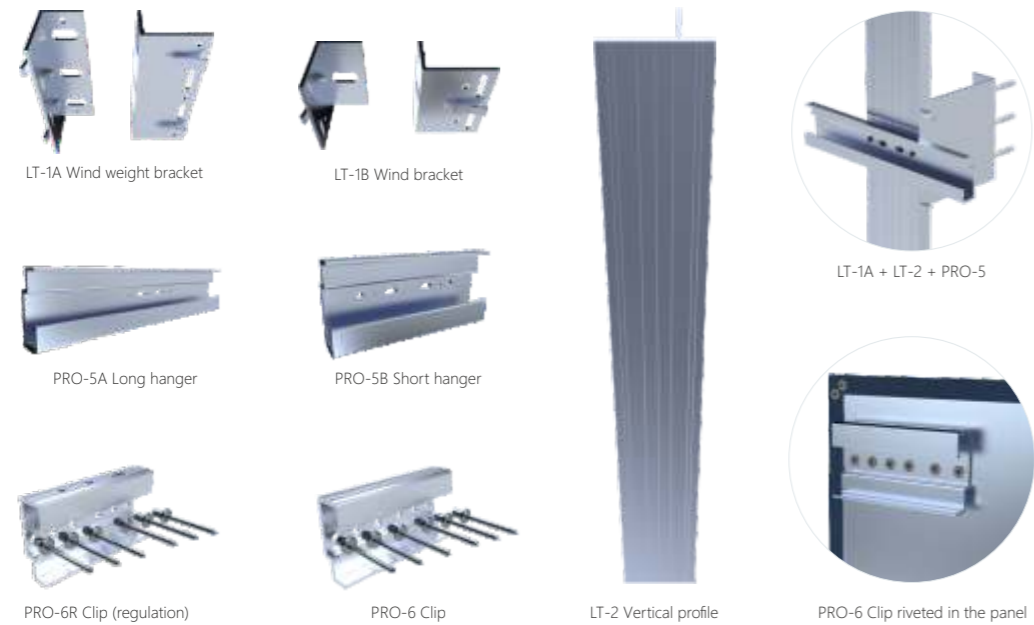
## ALUMINIUM HONEYCOMB CORE PROPERTIES

Aluminium alloy	3005 <sup>(1)</sup> EN 573-3 <sup>(1)</sup> Other alloy availables
Cell size ©	1/4 " ≈ 6,35 mm
Foil thickness (F)	50µ
Compressive strength	2,20 Mpa DIN 53291
Density (ρ)	56 kg/m <sup>3</sup>

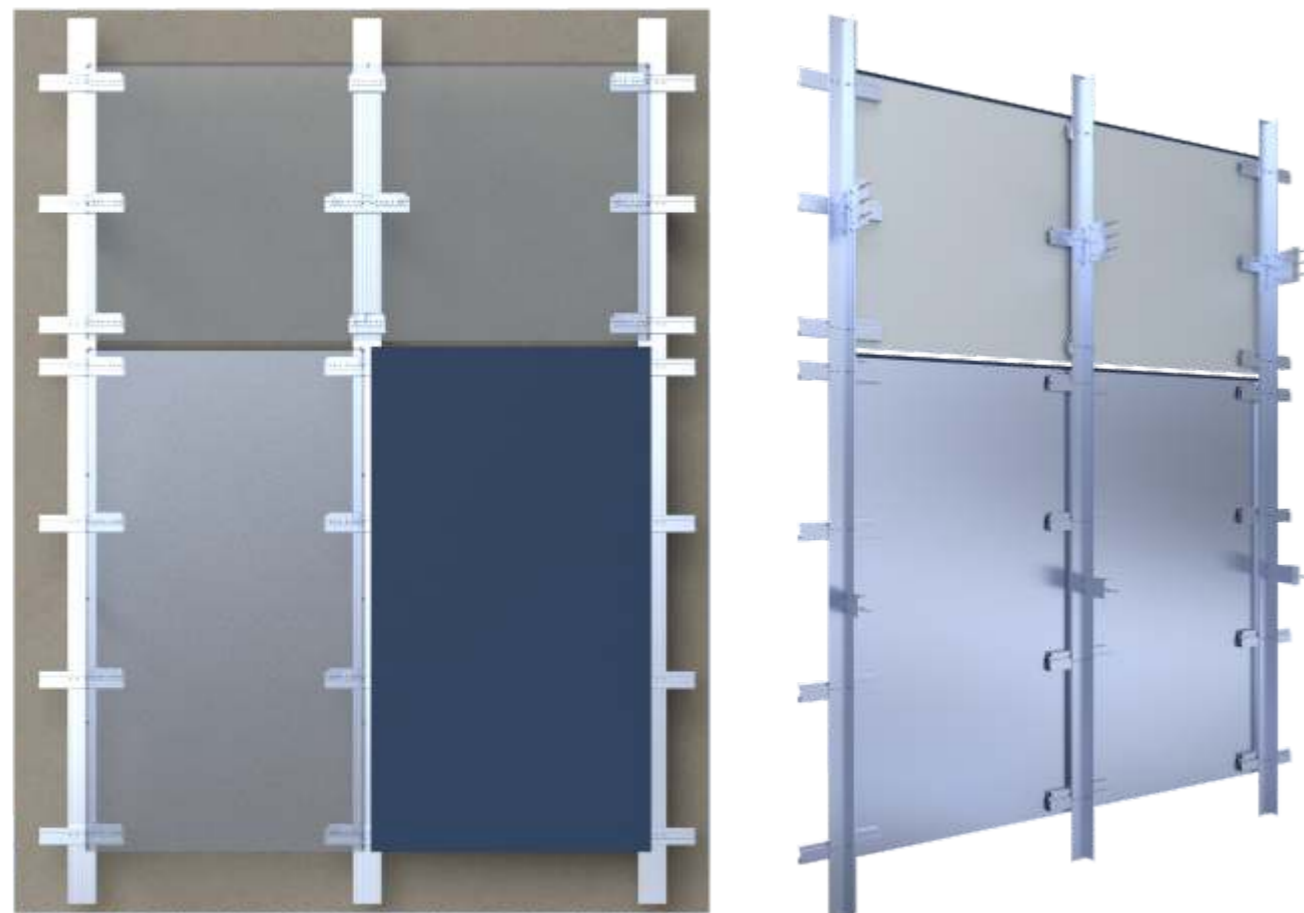


# Hidotech® PRO

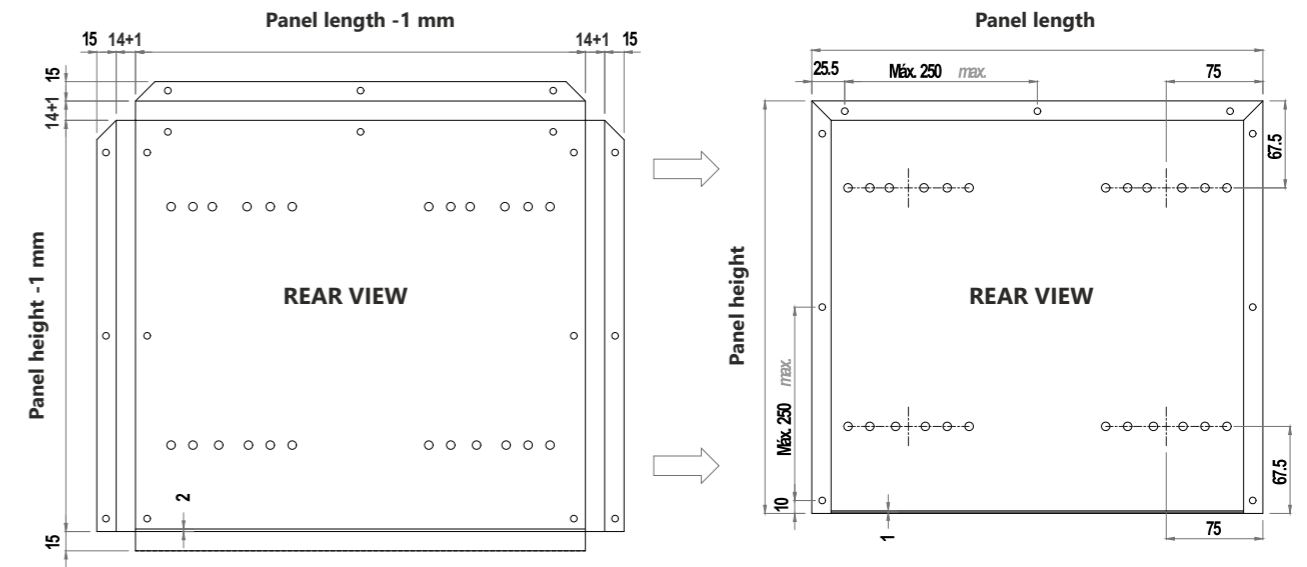
## DIFFERENT TYPES OF EDGING PANELS



Recommended for use on architectural façades. The installation of the **larcore® A2** panel must guarantee its watertightness.



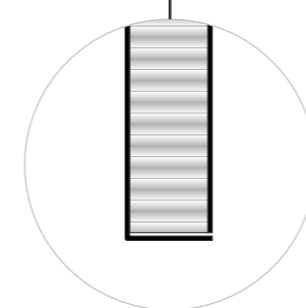
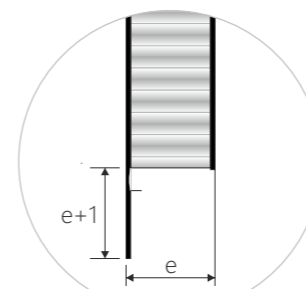
Example: **larcore® A2 14 mm** (double edging WITHOUT slope)



### LOWER EDGE

Simple edging

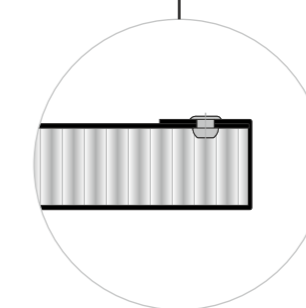
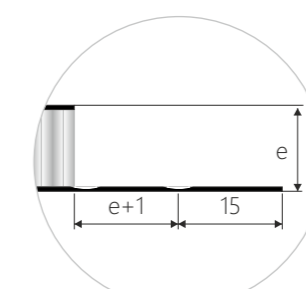
01



### LATERAL AND UPPER EDGINGS

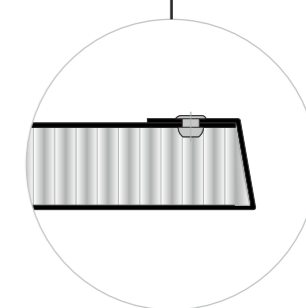
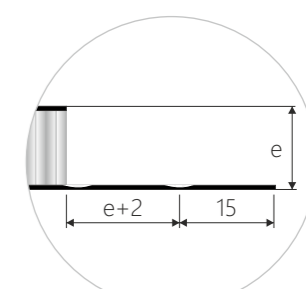
Option 1:  
Double edging without slope

02

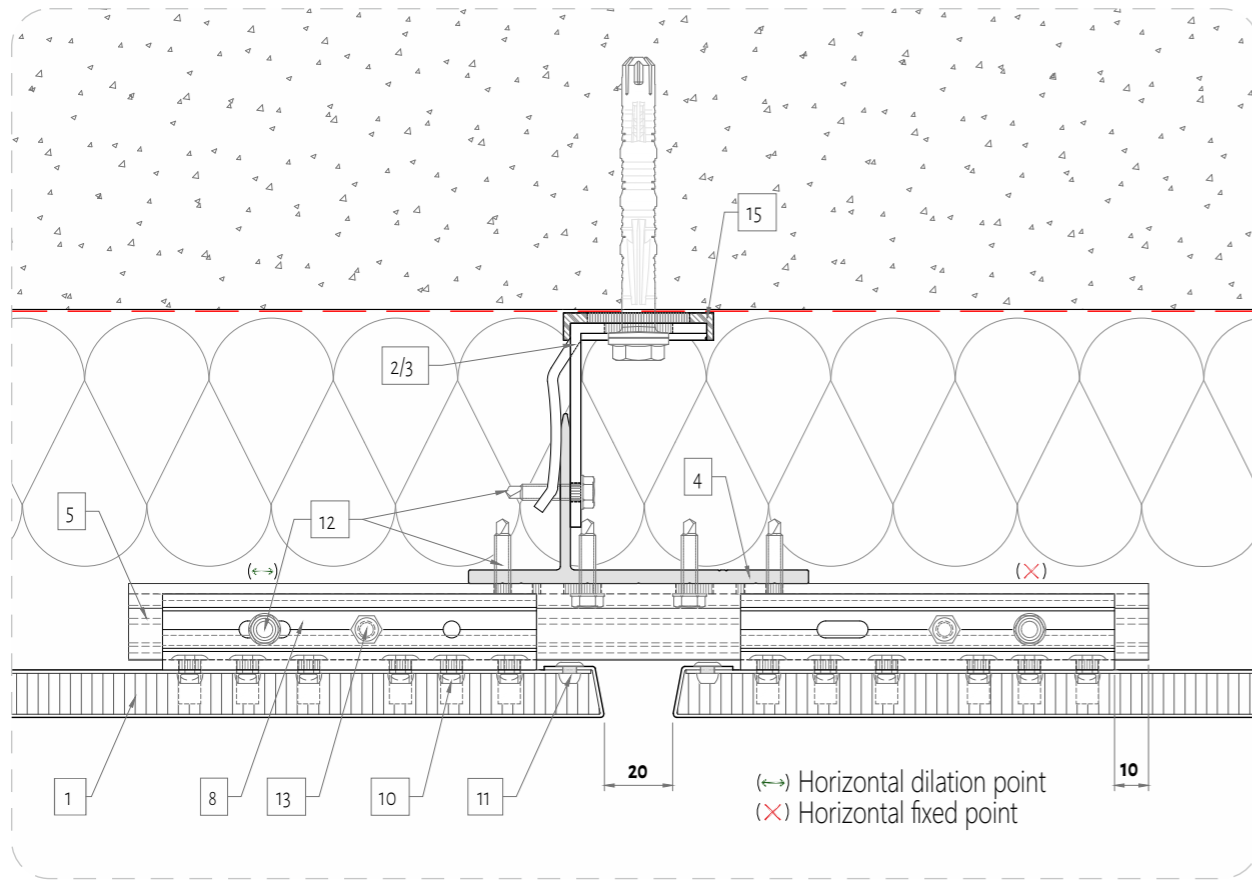


Option 2:  
Double edging with slope

03

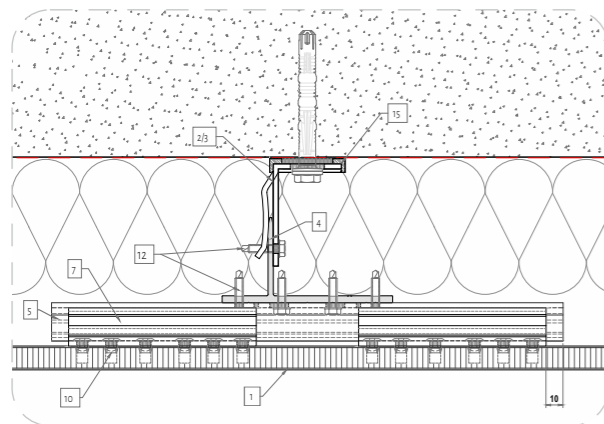


# CONSTRUCTION DETAILS

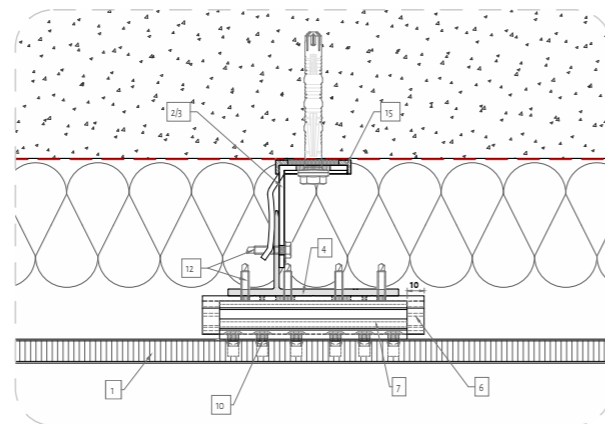


Vertical joint

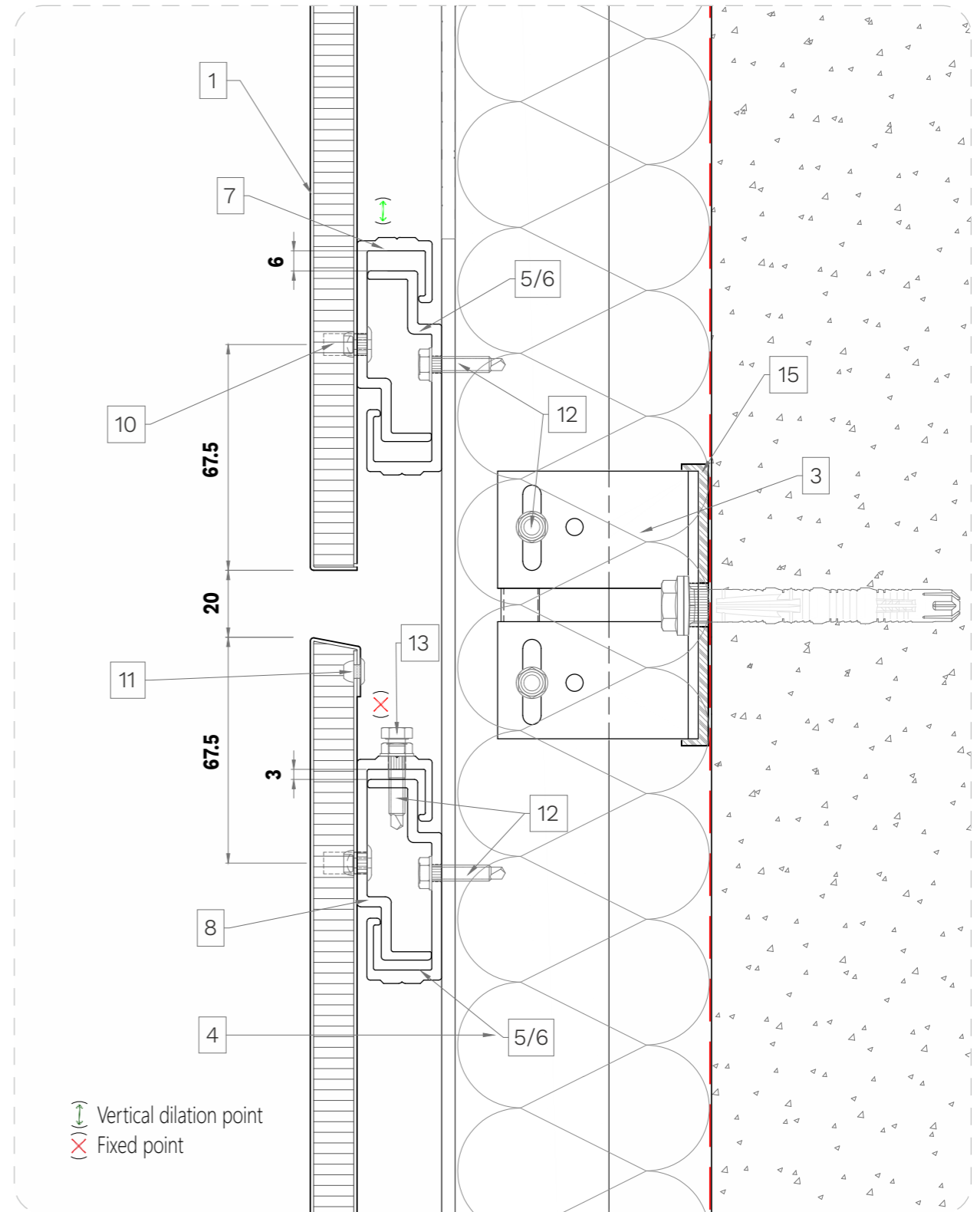
- |                              |  |
|------------------------------|--|
| 1. Iarcore® A2 14 mm         | 9. DOWSIL™ 7092 silicone                         |
| 2. LT-1A wind weight bracket | 10. Hidefix 64090 rivet                          |
| 3. LT-1B wind bracket        | 11. NeoSpeed Ø4.8x5.8mm (ref. 57121-14805) rivet |
| 4. LT-2 vertical profile     | 12. DIN 7504-K Ø4.8x22mm A2/50                   |
| 5. PRO-5A long hanger        | 13. DIN 933 M5x12mm A2/50                        |
| 6. PRO-5B short hanger       | 14. SikaTack Panel 50                            |
| 7. PRO-6 standard clip       | 15. LT-0A/B thermal break                        |
| 8. PRO-6R regulation clip    | 16. Aluminium plate 2-3 mm                       |



Intermediate long hanger



Intermediate short hanger

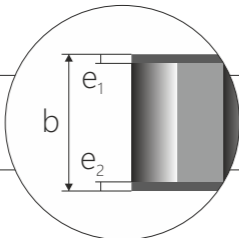


Horizontal joint

# OTHER PANELS

Aluminium honeycomb panels developed for systems present in the market.

## larcore® A2 8 mm - 10 mm - 14 mm

Total thickness "b" Tolerances ±0,2 mm		b= 6 mm - 8 mm - 10 mm
External skin thickness "e <sub>1</sub> "		e <sub>1</sub> = 0,7 (mm)
Internal skin thickness "e <sub>2</sub> "		e <sub>2</sub> =0,7 (mm)
Weight		4,83 (kg/m <sup>2</sup> ) - 4,94 (kg/m <sup>2</sup> ) - 5,19 (kg/m <sup>2</sup> )
Length min. / max.		2000 <sup>±</sup> - 14000 <sup>±</sup> (mm)
Standard width		1250 <sup>±</sup> - 1500 <sup>±</sup> - 1575 <sup>±</sup> - 2000 <sup>±</sup> (mm)



International Airport, Zurich, Switzerland  
© Burckhardt+Partner AG.

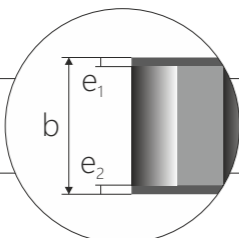
## MECHANICAL PROPERTIES

The purpose of the mechanical values is to be able to compare different product configurations. Specific calculations for each project must be requested to the **Alucoil**® technical department.

The properties of the coated aluminium and the aluminium honeycomb core are the same as those of the **larcore® A2 6 mm**

To access further details, please request the product technical datasheet or visit [www.alucoil.com](http://www.alucoil.com).

## larcore® A2 20 mm

Total thickness "b" Tolerances ±0,2 mm		b= 20 (mm)
External skin thickness "e <sub>1</sub> "		e <sub>1</sub> = 1,0 (mm)
Internal skin thickness "e <sub>2</sub> "		e <sub>2</sub> =1,0 (mm)
Weight		7,05 (kg/m <sup>2</sup> )
Length min. / max.		2000 <sup>±</sup> - 14000 <sup>±</sup> (mm)
Standard width		1250 <sup>±</sup> - 1500 <sup>±</sup> - 1575 <sup>±</sup> - 2000 <sup>±</sup> (mm)

Rigidity (EI) DIN 53293

	Transversal axis	Longitudinal axis
<b>larcore® A2 8 mm</b> Aluminium thickness: 0,7 mm	9421 (kNcm <sup>2</sup> /m)	7217 (kNcm <sup>2</sup> /m)
<b>larcore® A2 10 mm</b> Aluminium thickness: 0,7 mm	24458 (kNcm <sup>2</sup> /m)	22519 (kNcm <sup>2</sup> /m)
<b>larcore® A2 14 mm</b> Aluminium thickness: 0,7 mm	49915 (kNcm <sup>2</sup> /m)	45958 (kNcm <sup>2</sup> /m)
<b>larcore® A2 20 mm</b> Aluminium thickness: 1,0 mm	143868 (kNcm <sup>2</sup> /m)	121726 (kNcm <sup>2</sup> /m)

# FINISHES

## COATING POSSIBILITIES

### PVDF

(Polyvinylidene Fluoride)

Based on PVDF resins with extraordinary performance. Nominal paint thicknesses:

a) PVDF 2L Coastal: approx. 31µ

- Gloss from 20G to 40G.
- Excellent colour stability, minimal chalking and very good chemical resistance.
- Extraordinary protection against weathering, radiation and atmospheric contaminants.
- Outstanding flexibility when profiled, folded and coiled.

### DG5

(High Durable Polyester)

Based on HDP resins with nominal paint thicknesses (depending on the colour):

a) DG5 2L Coastal: approx. 35µ.  
a) DG5 3L Coastal: approx. 55µ.  
a) DG5 2L: approx. 25µ.

- Gloss from 10G to 90G.
- Excellent protection against weathering, UV radiation, and atmospheric contaminants.
- Outstanding hardness and flexibility when profiled, folded, and coiled.

### fluorlac®

(Fevé LUMIFLON™ 2 Layers)

Paint based on fluoropolymer resins with a nominal thickness of 30µ (depending on the colour).

- RAL & NCS colour chart available in matte, satin, and gloss finishes.
- Possibility of matching specific colours.
- Very small quantities available, orders starting from 100sqm with immediate delivery within 3-4 weeks.
- Weathering, ageing and abrasion resistance for outdoor use.
- **NEW fluorlac® Antigrffiti**

Durability in coastal areas



UV resistance



Warranty



Gloss level



Cleaning



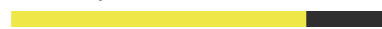
Durability in coastal areas



UV resistance



Warranty



Gloss level



Cleaning



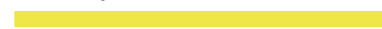
Durability in coastal areas



UV resistance



Warranty



Gloss level



Cleaning



# QUALITY

# CERTIFICATIONS

TYPE OF CERTIFICATE	AREA OF APPLICATION	CERTIFICATE
Company	International	Carbon neutrality - <b>Alucoil</b> *
	International	Zero waste - <b>Alucoil</b> *
Environmental	International	EPD® Environmental product declaration: <b>larcore® A2 6 mm (0,7/0,5)</b> <b>larcore® A2 14 mm (0,7/0,7)</b> <b>larcore® A2 14 mm (1,0/1,0)</b>
	Australia	CODEMARK <b>larcore® A2 6 mm (0,7/0,5) "Cm40198"</b>
Product with installation system	USA	INTERTEK <b>larcore® A2 14 mm (0,7/0,7)/(1,0/1,0) "SDReport 46046"</b>
	Ukraine	UA-TR Building reglament Ukraine <b>larcore® A2 8 mm (0,7/0,7) "UA-TR.042.17.18"</b>



MMV Dome Stadium, Budapest, Hungary - © György Skardelli.

## FULL-SCALE FIRE TESTING

Building fires are potentially dangerous events. Although they usually begin locally (rooms, apartments), if propagation is quick the fire can extend rapidly throughout the whole building. This propagation **is very much affected by the façade**: if it is well designed, it will prevent the fire from spreading rapidly and enable users to evacuate the building and the emergency services to reach the site to extinguish the fire.

This good performance of the façade cladding requires an in-depth study prior to its installation on the building. For this purpose, a multitude of tests are conducted under different standards, and on different scales. Generally small-scale tests, with weaker fires, are used to CLASSIFY how the different components of a façade react to fire. That is, they measure the contribution these products have to the fire. **But it is the large-scale tests that more accurately simulate the behaviour a façade will have against a real fire.**

A large-scale fire test consists of using a prototype of a complete façade (inner face, insulation, air cavity, outer face, cavity barriers, etc.) with large dimensions (3-5 metres wide x 6-10 metres high) to apply a real-life fire scenario (3-5.5 MW). The propagation of the fire is monitored visually and using thermocouples (sensors that measure temperature) installed in the prototype. The test usually lasts 30 minutes for the fire itself and a further 30 minutes of observation.

**If after the standard time the façade has passed all the fault criteria indicated in the corresponding procedure, we can be certain that its performance in a real fire will be very good and the fire will propagate slowly.**

Depending on the country and the regulations, there are different large-scale tests. For the products **larcore® A2, Alucoil®** has successfully passed the following:

- **BS 8414-1 and BS 8414-2** (under the classification criterion of the standard BRE 135 (United Kingdom).
- **NFPA 285** (USA).
- **LEPIR 2** (France).
- **CAN ULC S134** (Canada).

### FULL-SCALE FIRE TEST

### CLASIFICATIONS

European Union	<p>Fire performance of external cladding systems. Test method for non-loadbearing external cladding systems fixed to and supported by a structural steel frame.</p> <p><b>larcore® A2 6 mm</b> with <b>Hidotech® LIGHT</b> system has passed the BR 135 criteria tested according to BS 8414-2.</p> <p>Fire classification of construction products and building elements.</p> <p><b>larcore® A2</b> range, from 8 mm till 20 mm thickness, <b>Hidotech® PRO</b> system, A2-s1, d0 according to EN 13501-1.</p> <p><b>larcore® A2 6 mm</b> with <b>Hidotech® LIGHT</b> system, A2-s1, d0 according to EN 13501-1</p>
USA	<p>Full-scale fire test. Standard Fire Test Method for Evaluation of Fire Propagation Characteristics of Exterior Wall Assemblies Containing Combustible Components.</p> <p><b>larcore® A2 14 mm</b> with <b>Hidotech® PRO</b> system. <b>PASSED</b> according to <b>NFPA 285</b>.</p>
Canada	<p>Standard Method of Fire Test of Exterior Wall Assemblies.</p> <p><b>larcore® A2 14 mm PASSED</b> according to <b>CANULC S134</b>.</p> <p><b>larcore® A2 14 mm</b> 0.7/0.7 is ULC-S135 compliant to be used in noncombustible construction as defined by the National Building Code of Canada.</p>

### FIRE TEST

### CLASIFICATIONS

Australia New Zealand	<p>Methods for fire tests on building materials, components and structures.</p> <p>Part 1: Combustibility test for materials.</p> <p><b>larcore® A2 6 mm NOT COMBUSTIBLE</b> according to <b>AS 1530.1</b>.</p> <p>Methods for fire tests on building materials, components and structures simultaneous determination of ignitability, flame propagation, heat release and smoke release.</p> <p><b>larcore® A2 6 mm</b> according to <b>ASNZS 1530.3</b>.</p>
USA Canada	<p>Standard Test Method for Determining Ignition Temperature of Plastics.</p> <p><b>larcore® A2 14 mm</b> according to <b>ASTM D1929</b>.</p> <p>Standard test method for the determination of combustibility parameters of building materials using an oxygen consumption calorimeter (CONE CALORIMETER).</p> <p><b>larcore® A2 14 mm</b> according to <b>ASTM E84</b>.</p> <p><b>larcore® A2 14 mm</b> according to <b>CANULC S135</b>.</p>



**Alucoil®** has a website where the client can find out about the main projects completed. It is a showroom for projects and the available finishes, where you can consult the material, colour, year of construction and the architect of the project, as well as the exact location. In addition, it offers the client a virtual introduction to the range of finishes and colours available from **Alucoil®**, as well as the new developments that are constantly being made in the different paint qualities available.



Woodwork, Saint-Denis, France.  
Nicolas Laisné Architectes - © Cynille Weiner

# SUNSHADES

## Integrating sun shades into architectural projects.

The **larcore® A2** panel is the ideal product for making sun shades of buildings, as it is lightweight, rigid and slim. Large elements can be made with panels of thicknesses between 20 and 40 mm.

Sun shades add a touch of sophistication to a building's façade, creating a dynamic interaction between light and shade that completely transforms the perception of space. Installing sun shades on the buildings is not just about aesthetics, they also improve the comfort and well-being of those who live in or use the spaces.

As they provide shade and reduce excessive heat, they help keep the interior environment cooler and more comfortable, boosting the productivity and enjoyment of the users.

**Alucoil®**, as a company committed to sustainability, is constantly seeking solutions that minimise the environmental impact of its projects. Sun shades are powerful allies in this mission, as they reduce the thermal load on buildings and reduce the need for artificial cooling.

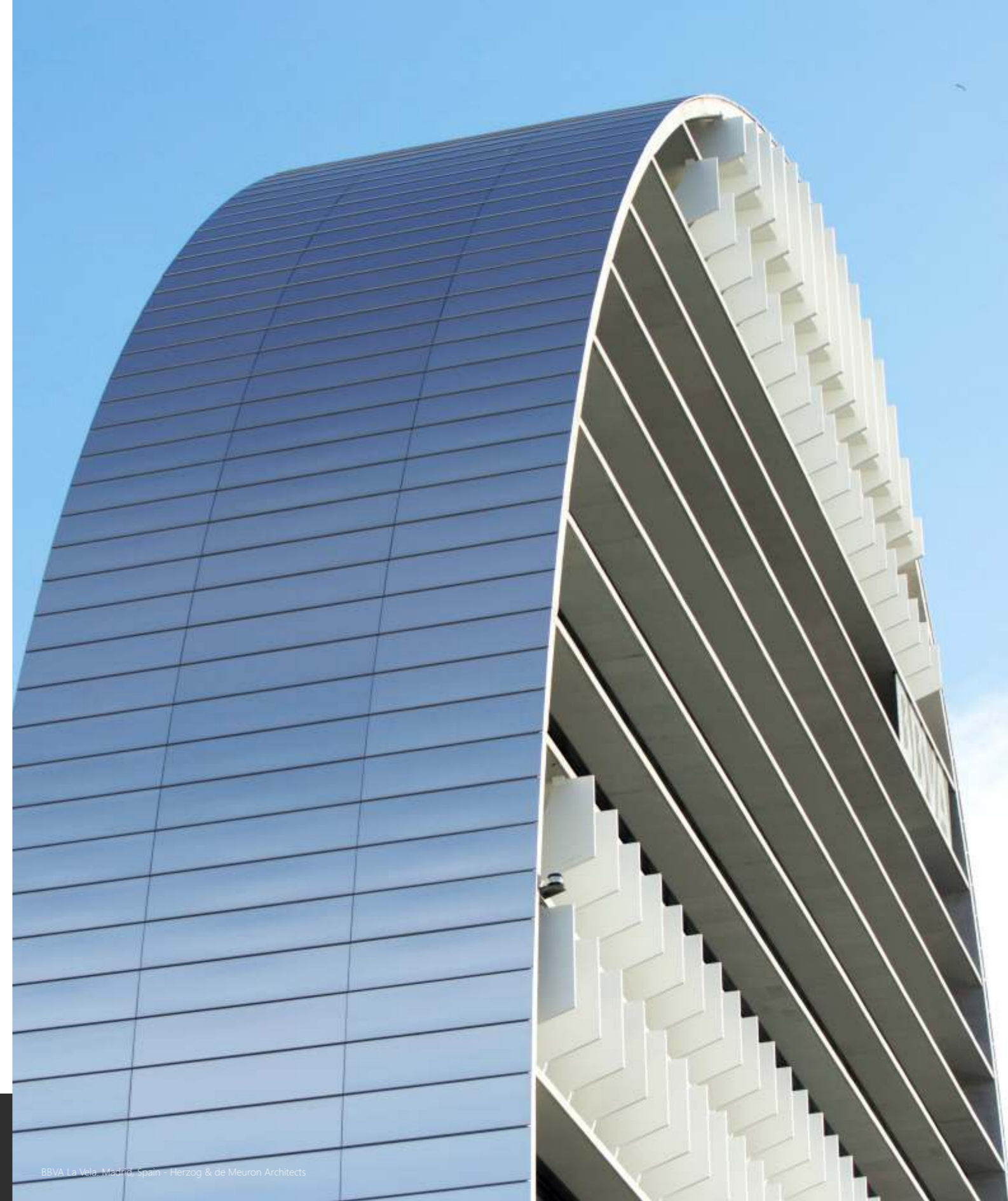
One of the benefits of using the **larcore® A2** panel in sun shades is the versatility it provides in terms of design and functionality. From fixed sun shades, which add a sculptural element to the façade, to mobile sun shade systems\* that are adjusted automatically to adapt to the changing weather conditions, the possibilities are infinite. The integration of sun shades in architectural projects is more than an aesthetic choice; it is a strategic decision that improves the comfort, efficiency and sustainability of the building.

\*System motorization outside **Alucoil®**.

## SUNSHADES FAÇA



W Tower, Lisboa, Portugal.  
Sarriya + Associados Architects.



BBVA La Vela, Madrid, Spain - Herzog & de Meuron Architects

This catalogue provides general information on **Alucoil®** and their products. Despite having verified all of the information contained in this catalogue, **Alucoil®** does not accept any liability for any errors or printing failures that may lead to material damage, inaccuracies or misunderstandings. All of its contents are for informational purposes only and can be confirmed directly with the company itself.

**Alucoil®** reserves the right to update, modify, edit or remove any content without prior notice.

The information contained in this document is for guidance purposes only and may undergo changes. **Alucoil®** accepts no responsibility for the use of this catalogue, which, in any event, is aimed at people with technical training, and is subject to their responsibility and criterion. Any unauthorised reproduction, distribution, public communication and/or transformation of this document will be an infringement of intellectual property law.



Marriott Courtyard, Batumi, Georgia - © Alliance Group.



**Alucoil**<sup>®</sup>

Grupo Alibérico

[www.alucoil.com](http://www.alucoil.com)



NuStone JAPAN

**NuStone JAPAN Co.,Ltd.**

Eco-Friendly Materials for a Sustainable future

株式会社ニューストーンジャパン  
〒170-0002 東京都豊島区巣鴨 1-41-11  
TEL 03-5980-9924

<http://www.nustone-japan.co.jp>  
<http://nustone-japan.order403.jp>  
e-mail [contact@nustone-japan.co.jp](mailto:contact@nustone-japan.co.jp)