

 NuStone JAPAN


WAYON
— 威洋石材 —




NuStone JAPAN Co.,Ltd.
Eco-Friendly Materials for a Sustainable future

株式会社ニューストーンジャパン
〒170-0002 東京都豊島区巣鴨 1-41-11
TEL 03-5980-9924

<http://www.nustone-japan.co.jp>
<http://nustone-japan.order403.jp>
e-mail contact@nustone-japan.co.jp



高性能无机水磨石
Techrazzo

无机水磨石
Inorganic Terrazzo

无机石英石
Inorganic Quartz Stone



威洋无机水磨石 Wayon Inorganic Terrazzo

威洋全球，品质如一。

三十多年来，威洋时刻秉承着“诚信与品质”的经营理念，为各种各样的消费者提供了千千万万的石材产品。目前，威洋石材已经成为拥有自有矿山、研发中心以及广东威洋实业、佛山威洋殿堂级展厅、云浮威洋、上海威洋、江苏威洋、广州威洋、新新石材专业工程配套中心等众多分支机构的大型企业集团。

传统的现浇水磨石因为其制作工艺简单，施工困难的原因，存在容易损坏、颗粒分布不均匀、泛白反碱等问题。而威洋无机预制水磨石，不仅保留了水磨石的无机物特性，并且拥有高抗压抗折强度、低吸水率、施工铺贴简单、款色稳定多样等优点，更加适合现代社会建筑的需求。

Wayon Stone Quality All The Way.

For over 30 years, inspired by its business philosophy of "integrity and quality", Wayon is proud of serving thousands of consumers with a variety of quality stones. At present, WAYON STONE is established as a large stone group with its own quarries, R&D center and many branches across China, including Guangdong Wayon Industry, Foshan Wayon Exhibition Hall, Shanghai Wayon, Jiangsu Wayon, Yunfu Wayon, Guangzhou Wayon, C-Stone Engineering supporting center and so on.

Because of the simple process and difficult construction, the traditional terrazzo has some problems such as low hardness, high water absorption and less color. Wayon Inorganic Terrazzo not only retains the inorganic properties of terrazzo, but also has the advantages of high particle strength, low water absorption, simple construction and variety of colors. It is more suitable for the current concept of building.

无机石特性

Inorganic Stone Characteristic

威洋无机石含有天然石英质类原材料可达60%以上，采用环保型无机粘接剂、无机颜料，不含树脂、胶水等有机成分，通过高频高压震动压制成型。骨料含量更高、产品莫氏硬度高，耐磨耐刮花，效果保持更加长久。不含树脂等有机成分，原材料均为不燃、耐燃材质，产品达国际A级耐火标准，且高温下不易变形，不产生有害气体，安全环保。

Wayon inorganic stone contains up to 60% natural quartz-like raw materials. It's made of environment-friendly inorganic adhesives, inorganic pigments, and does not contain organic components such as resin glue. It is formed by high frequency and high pressure vibration.

It has a high aggregate content and high mohs hardness, wear resistance and scratch resistance, making the product more durable.

Without resin and other organic components, the raw materials are non-combustible and non-flammable materials, the product reaches the international a-class fireproof standard, and is not easy to deform under high temperature, does not produce harmful smoke, it's safe and environmentally friendly.



高硬度

体积密度和莫氏硬度高，具有良好的耐磨性。



高抗压、抗折强度

高抗压强度，高抗折强度。适用于荔枝面处理和45度角拼接等加工工艺。



持久耐用

高耐火性、抗冰冻，抗酸抗腐蚀性化学物品。抗污能力强，防雨水，盐雾腐蚀。



持久靓丽

产品拥有一定的油性，光泽度高。抗紫外线强，户外不容易变色褪色，不易变形。



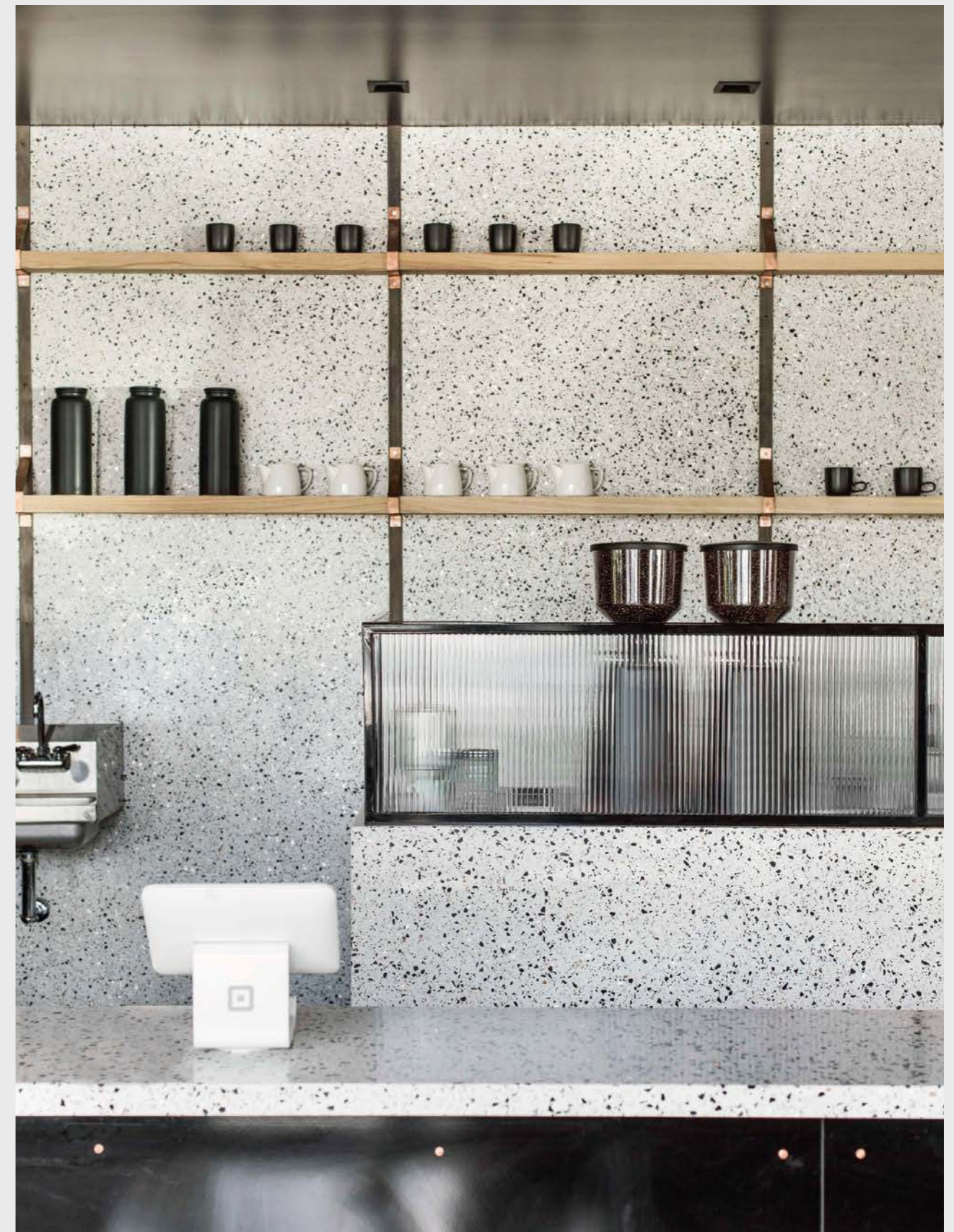
图案丰富，绿色环保

可定制调色与纹理，勾画独特空间。不含树脂，不易变形，不产生有毒物质。



低吸水性

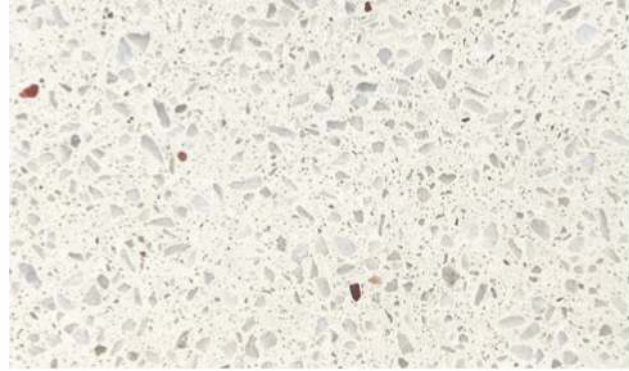
极低吸水率，可大幅度减少反碱现象。适用于室内外墙地板，厨卫台面等领域。



WT240 冰钻白石



云山素白 Summit Pure White
WT134



漫天灰白 Sky Grey White
WT131



拜伦白 Byron White
WT258



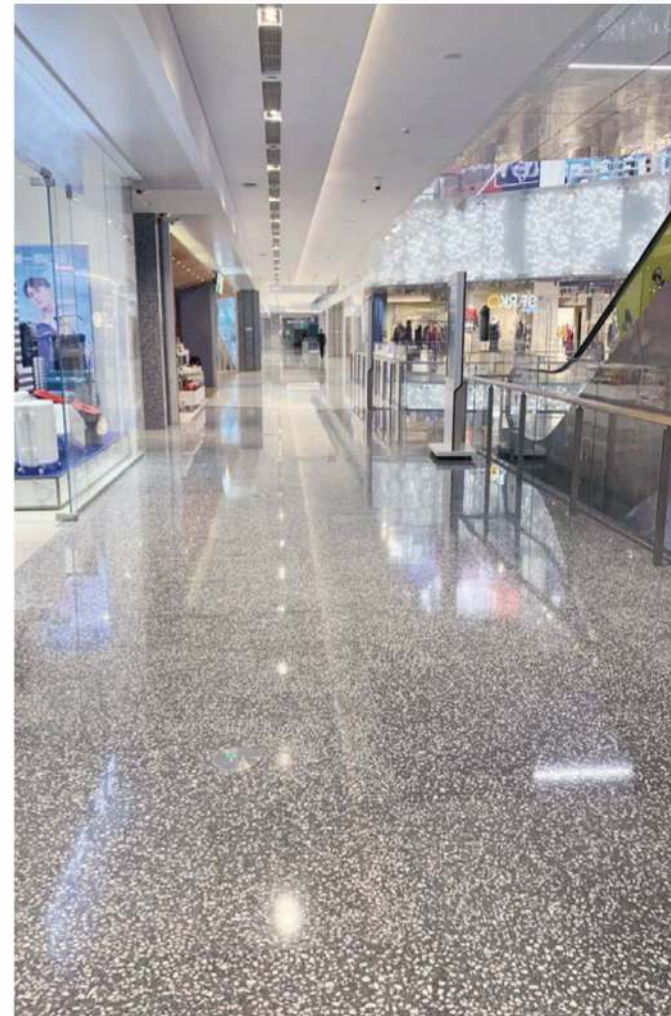
银装白 Ice White
WT225



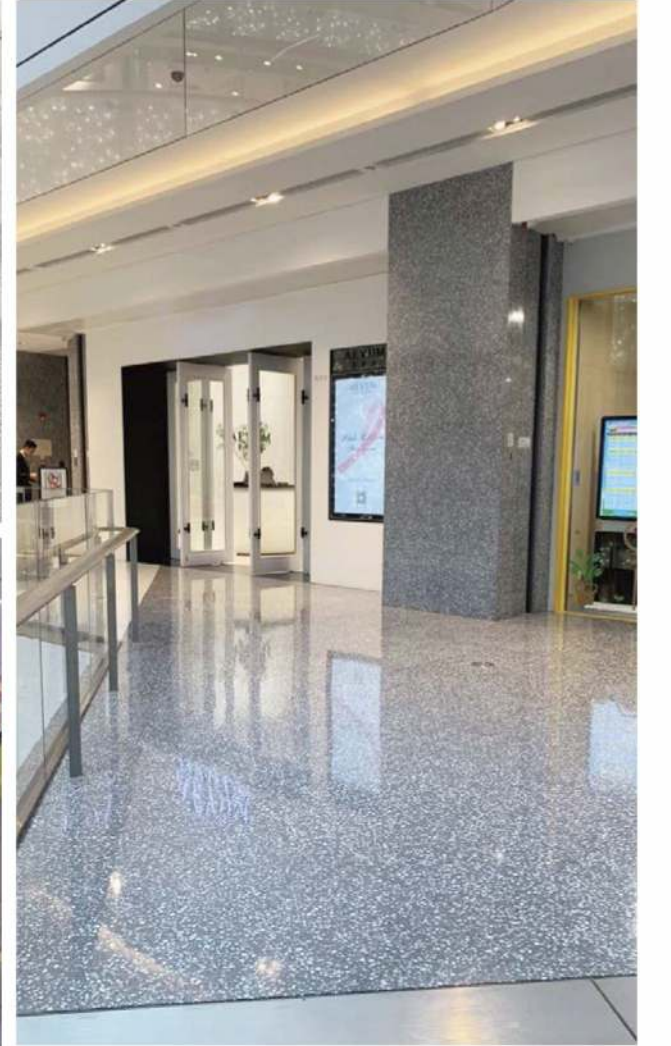
冰钻白石 Diamond Ice
WT240



漫天灰 Sky Grey
WT132

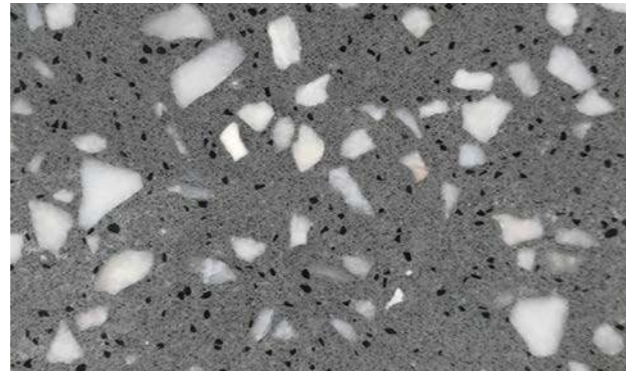


WT241-2 华伦天奴中灰 Valentino Medium Grey / WT256 前锋白 Striker White





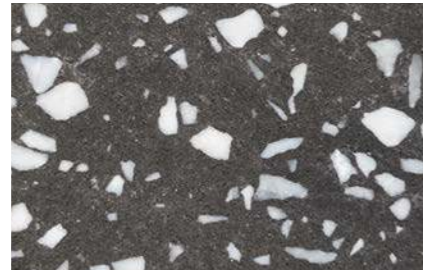
华伦天奴灰 Valentino Grey
WT241



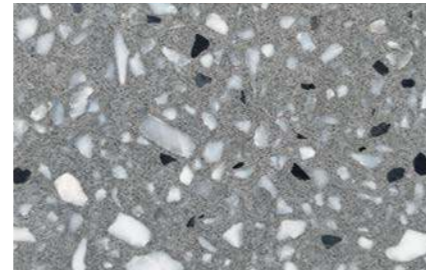
华伦天奴中灰 Valentino Medium Grey
WT241-2



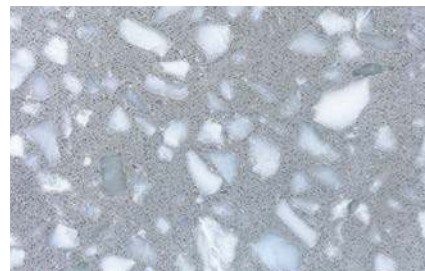
岩山浅灰 Iwayama Grey
WT210



华伦天奴深灰 Valentino Dark Grey
WT232



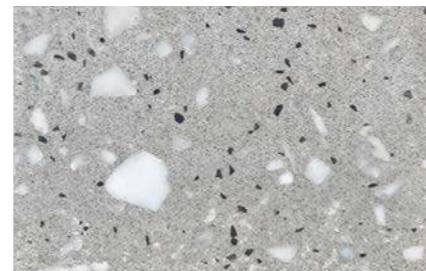
岩山白玉 Iwayama Alba
WT248



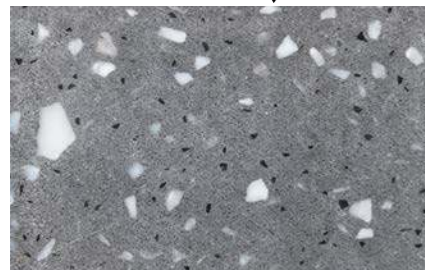
岩山白麻 Iwayama Oakum
WT254



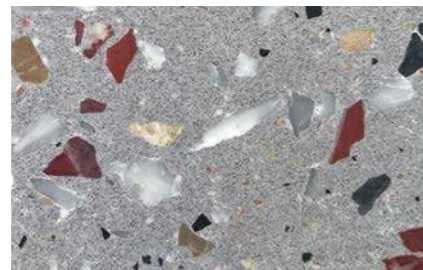
岩山点雪 Iwayama Snow
WT255



岩山淡灰 Iwayama Light Grey
WT261



岩山中灰 Iwayama Medium Grey
WT262



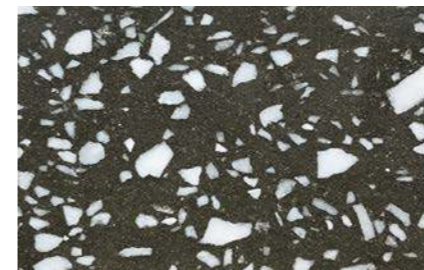
岩山彩花 Iwayama Acantholimon
WT263



新天地深灰 Sunday Dark Grey
WT264



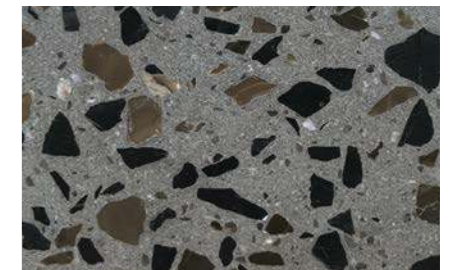
WT241 华伦天奴灰 Valentino Grey



华伦天伦黑灰 Valentino Smoky Grey
WT268

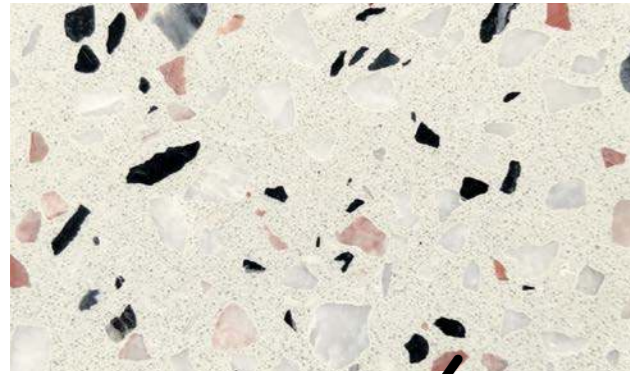


炭晶黑 Carbon Black
WT269

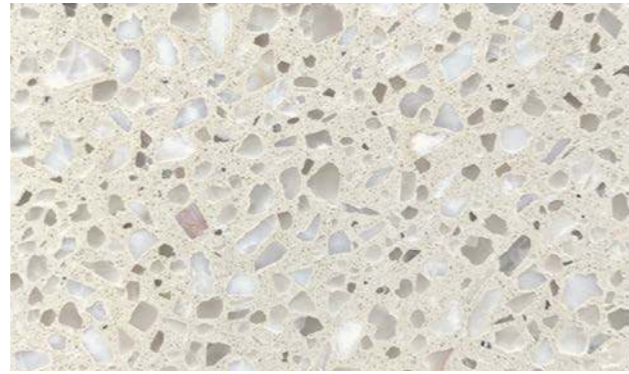


岩山古棕 Iwayama Brown
WT270

无机水磨石 Inorganic Terrazzo



罗马粉白 Roman Pink-white
WT242



星罗米白 Seira White
WT123



罗马茶花 Roman Camellia
WT243



罗马彩玉 Roman Rainbow
WT246



星罗白玉 Seira White Jade
WT130



松香淡黄 Rosin Yellow
WT231



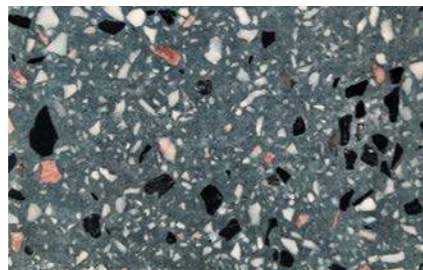
罗马彩花 Roman Acantholimon
WT201



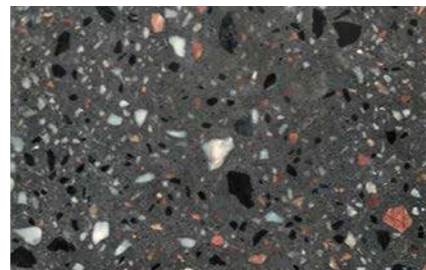
外星黑钻 Diamond Black
WT219



星罗米黄 Seira Yellow
WT118



星罗蓝 Seira Blue
WT121



星罗青灰 Seira Grey
WT119

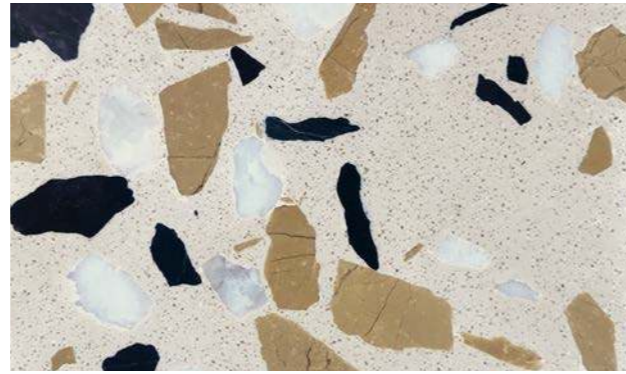


WT123 星罗米白 Seira White

无机水磨石 Inorganic Terrazzo



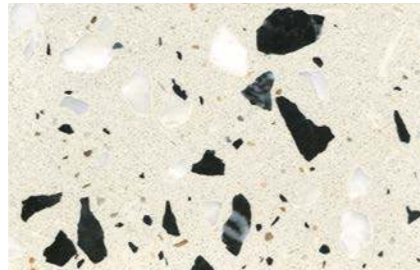
卡娜白 Kala White
WT267



拜伦金 Byron Gold
WT266



银装白II Ice White II
WT225-2



黑斑点彩 Black Stippling
WT253



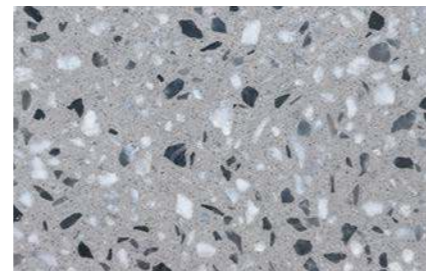
罗马彩啡 Roman Brown Jade
WT245



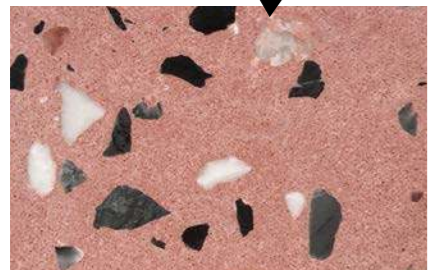
罗马彩珀 Roman Color Amber
WT252



新天地灰 Sunday Grey
WT265



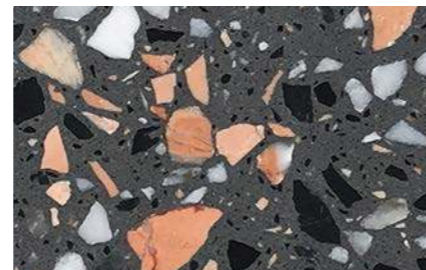
拜伦灰 Byron Grey
WT257



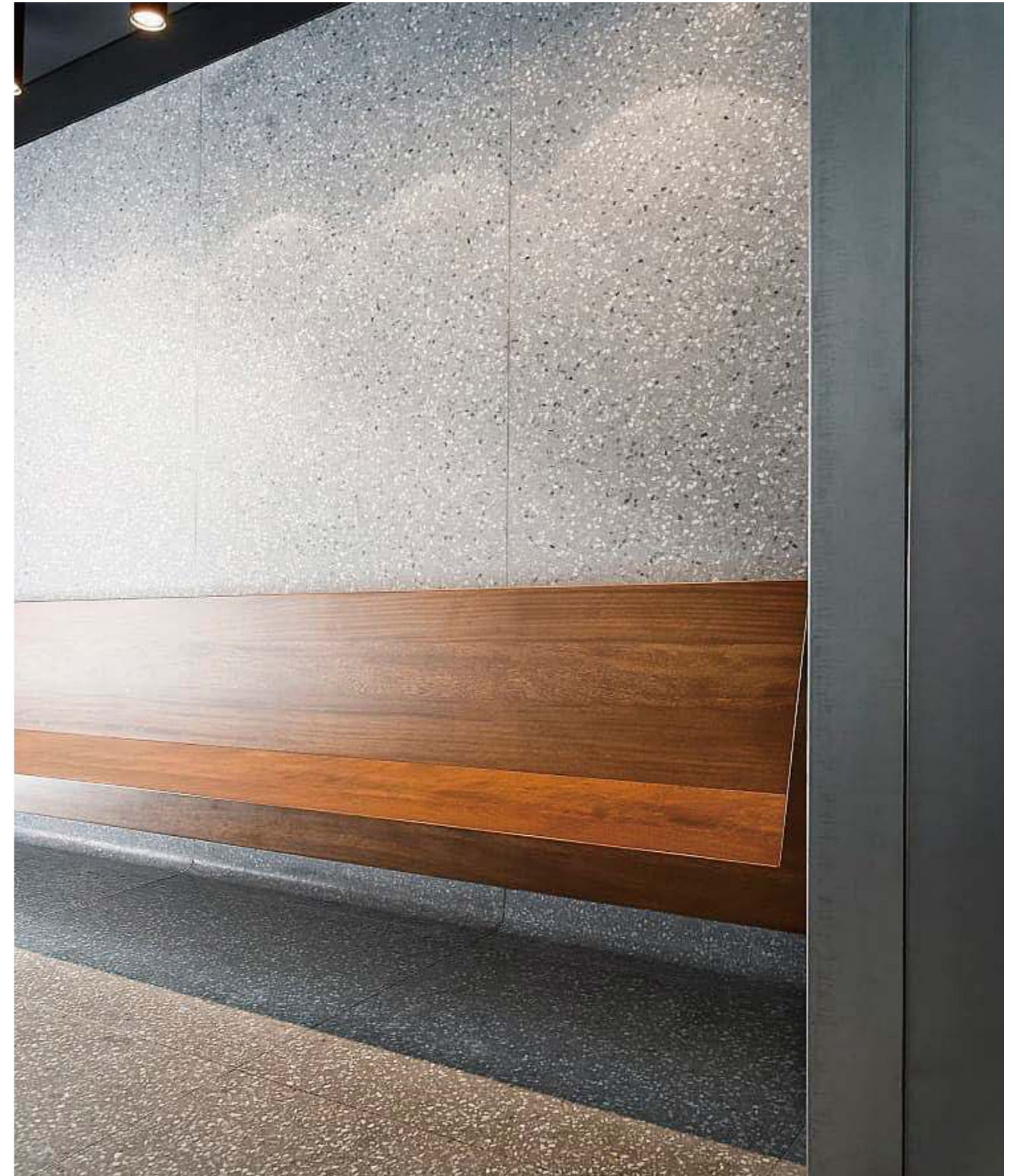
罗马粉红 Roman Pink
WT250



黄金加彩 Color Gold
WT251



岩山彩金 Iwayama Gold
WT259



WT257 拜伦灰 Byron Grey



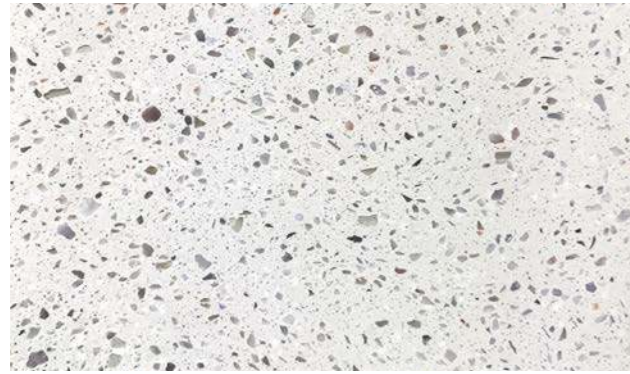
适用领域 / Application Fields

因为威洋无机石耐磨、耐火、光泽度高、吸水率低等优点，使威洋无机石除了可以广泛应用于室内外墙身、地面、厨房、卫生间等领域外，还能适用于大型商场、品牌专卖店、高端餐厅及市政工程建设等各种建筑。

With its advantages of high abrasion, fire resistance, gloss and low water absorption, Wayon Inorganic Stone can be used for indoor and outdoor wall & floor, kitchen and bathroom, as well as shopping malls, brand shop, restaurants, municipal constructions and so on.



无机水磨石 Inorganic Terrazzo



新天地白 Sunday White
WT136



玉露米黄 Gyokuro Beige
WT111



云山白 Summit White
WT101



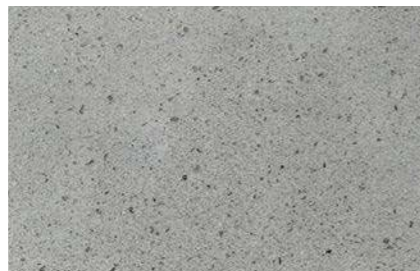
云山米白 Summit Beige White
WT103



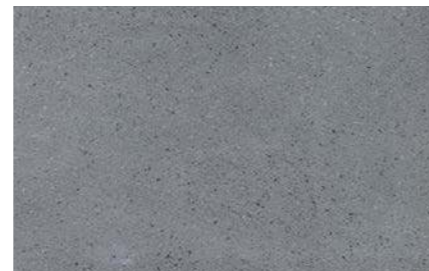
米露黄 Gyokuro Yellow
WT110



云山雪白 Summit Snow White
WT120



无机浅灰 Inorganic Grey
WT114



无机深灰 Inorganic Dark Grey
WT115



星光棕 Starlight Brown
WT135



细麻灰 Linen Grey
WT137



细麻深灰 Linen Dark Grey
WT138



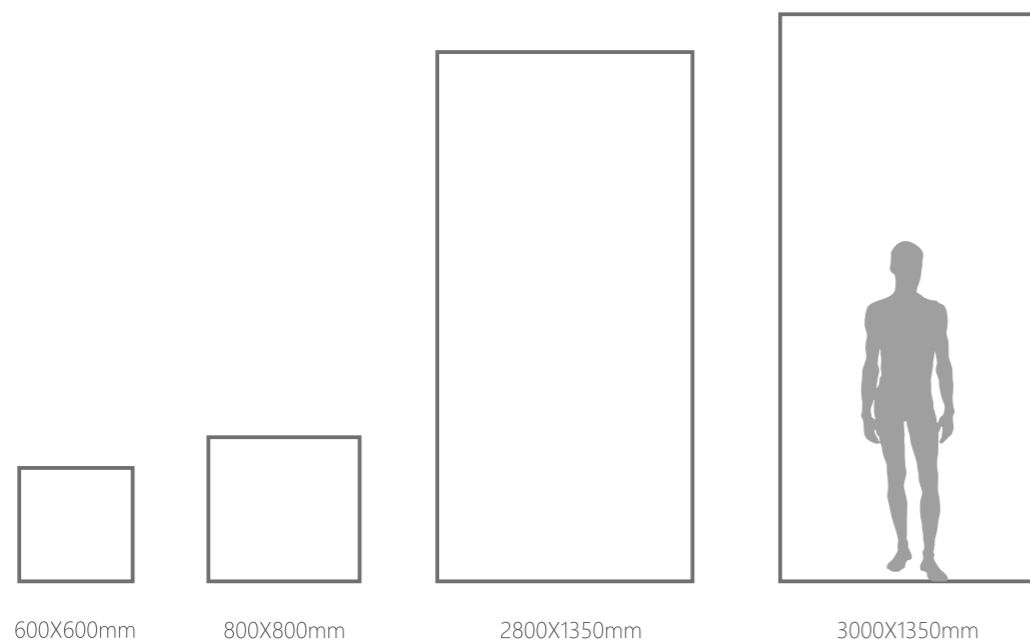
WT114 无机浅灰 Inorganic Grey

尺寸列表 Size List

| | | | | | | |
|---------------------|---------------------|---------------------|-----------------------|----------------------|----------------------------|--|
| 尺寸 Size of slabs | 2400X1350mm/94"x53" | 2500X1350mm/98"x53" | 2800X1350mm/110"x53" | 3050X1200mm/120"x47" | 3000X1350mm/118"x53" (MAX) | |
| 规格板 Cut to sizes | 600x600mm | 800x800mm | | | | |
| 表面处理 Finishing | 抛光 Polished | 哑光 Honed | 荔枝面 Brush-hammered | 火烧面 Flamed | 水冲面 Water-jet | |

可依据订单要求定制尺寸。
All sizes can be made by order.

厚度 Thickness  15mm  18mm (常规)  20mm  30mm



传统水磨石（现浇）性能对比表 Comparison with Traditional Terrazzo

| 检查项目 Test Item | 单位 Unit | 传统水磨石（现浇） Traditional Terrazzo | 威洋无机水磨石 Techrazzo |
|-----------------------------------|-------------------|---|---|
| 吸水率 Water Absorption | % | ≥3 | 0.19~0.53 |
| 莫氏硬度 Moh's Hardness | 级 | 3 | 4~6 |
| 密度 Density | g/cm ³ | < 2.3 | 2.37~2.49 |
| 压缩强度 Compressive Strength | Mpa | < 90 | 101~109 |
| 干燥弯曲强度 Flexural Strength (Dry) | Mpa | < 8 | 12.2~13.5 |
| 光泽度 Gloss | - | < 30 | 49.3~63 |
| 放射性 Radioactivity | - | I _{Ra} < 0.1 I _γ < 0.1 | I _{Ra} < 0.1 I _γ < 0.1 |
| 无气孔 Pore-Free | - | • | ••••• |
| 加工难度 Processing Difficulty | - | 多为现浇无加工 | 极佳, 无缝拼接, 45°拼接 |
| 抗化学腐蚀 Chemical Resistance | - | • | ••••• |
| 耐磨性 Wear Resistance | - | ••• | ••••• |
| 抗冻融 Freeze-Resistant | - | • | ••••• |
| 应用领域 Application Area | - | 室内外墙地面 | 室内外墙地面、家居用途、厨卫台面板 |
| 售后 After-Sales | - | 易开裂, 有气孔 | 不会起翘、发黄、开裂、无气孔 |
| 施工 Construction | - | 需要现场水打磨, 易造成水污染 | 直接水泥沙或瓷砖胶铺贴, 没有水污染 |
| 养护 Conservation | - | 养护时间长, 施工周期长 | 不需要养护时间, 施工快 |
| 防水性 Waterproof | - | 需要做自流平、防水层, 增加成本 | 铺贴不需要做防水, 降低成本 |
| 成品质量 Quality | - | 没有大吨位压制, 人工搅拌, 布料不均匀, 致密度不高, 易有气孔开裂问题 | 通过抽真空大吨位压机压制, 致密度高, 经过精密搅拌, 布料系统, 颜色统一, 布料均匀 |
| 表面处理 Surface Treatment | - | 浇筑好的水磨石需要再次做表面处理提高防污 | 表面用物理抛光即可达到高光泽度, 不需要二次表面处理 |

